

TPE3 (D) and TPE2 (D)

End-of-Life Information

This document is intended for treatment and recycling facilities and provides information on components, materials, handling, and dismantling of the product when it reaches the end of its life, to facilitate correct and environmentally sound treatment.

Grundfos TPE3 (D) and TPE2 (D) must be disposed of in accordance with local regulations, using authorized WEEE collectors and designated collection points. If these are not available, please contact the nearest Grundfos company or service workshop.

This information is only related to the pump part – for end-of-life information about the motor please look up the motor itself.

Safety risk

- **Safety risk related to materials used.**

The product, being an electrical equipment, contains materials and substances that may be hazardous and pose risks to the environment if it becomes waste and is not handled correctly. Please refer to the [EU's SCIP database](#) and the REACH SVHC Content lookup tool via this [link](#) to find the SVHC content present in the product.

There is no risk to people during the disassembly process posed by the material used in the product.

- **Safety risk related to handling the product.**

Take care when handling the pump due to the weight.

Be sure that the pump is clean and empty for liquid before disassembly.

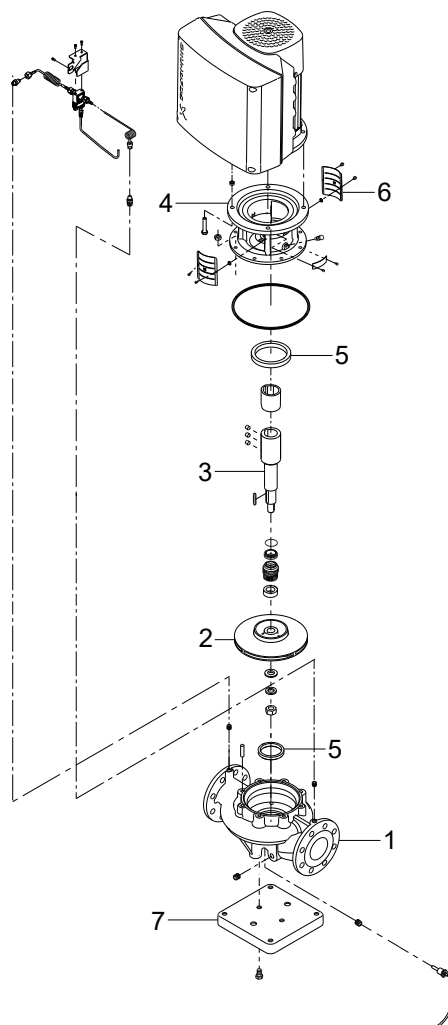
- **Special disassembly considerations**

For stub shafts the stainless steel and steel parts are friction welded together.

Dismantling the product

The main materials of the components are:

- Cast iron
- Stainless steel
- PPS-GF 40
- Steel
- Bronze



TM090563

Pos.	Designation	Material
1	Pump housing	Cast iron
2	Impeller	Cast iron/Stainless steel/PPS-GF 40
3	Stub shaft	Stainless steel/Steel
4	Motor stool	Cast iron
5	Wear ring	Bronze/Steel
6	Shaft guard	Stainless steel
7	Base plate	Steel
Additional materials:		Screws, gaskets, shaft seal etc.: Various material less than 5% of weight